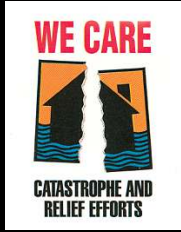


## The Square D We Care Program



The Square D We Care program is a comprehensive package designed to help bring relief to communities that have suffered serious natural disasters that have damaged the electrical distribution systems of factories, offices and homes. Through the We Care program, which is activated for locations declared Federal Disaster Areas, we:

- Take special steps to ensure adequate local supply of electrical equipment
- Make every effort to fulfill all orders regardless of designation as an expedited order\*
- Offer comprehensive educational materials for electrical contractors, inspectors, insurance adjusters and consumers promoting the safe restoration of electrical power
- Provide a Red Cross donation to help bring relief and assistance to those in need

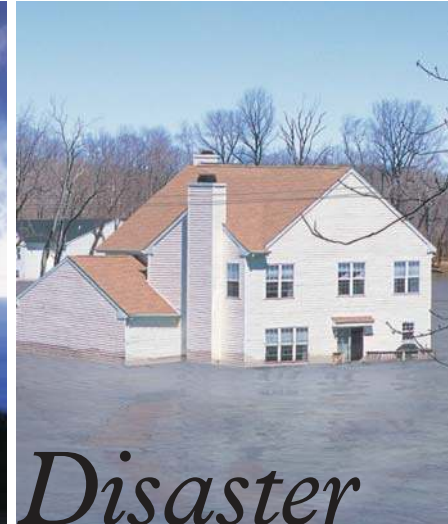
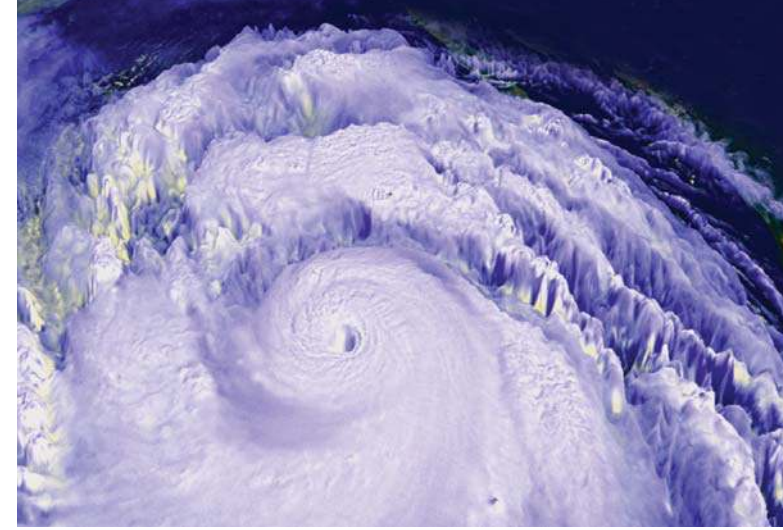
*\*Acceptance of such orders is subject to availability of transportation*

## For Assistance

The Square D Services Group provides a variety of services, including inspecting, testing and reconditioning (when possible) of electrical equipment in commercial and industrial applications. For more information, contact the Customer Information Center (CIC) at 888-778-2733 (888-SQUARED).

We have produced a Product Data bulletin, "Water Damaged Electrical Distribution and Control Equipment," for those who require more information. To obtain a copy, or for assistance, contact a Square D sales engineer or authorized sales outlet.

For a distributor location near you, visit our web site: [www.us.squared.com](http://www.us.squared.com).



# One Disaster is Enough



Safely restoring  
electrical power after  
disaster strikes



### Schneider Electric - North American Operating Division

1415 S. Roselle Road  
Palatine, IL 60067  
Tel: 847-397-2600  
Fax: 847-925-7500

Order Number 0101BR9802R8/04

8-04

© 2004 Schneider Electric All Rights Reserved



# Once is enough



***When disaster strikes, once is enough. Floods, hurricanes, earthquakes and other natural disasters often result in the interruption of electrical service to factories, offices and homes. If electrical systems have been damaged, we know customers are anxious to get the power back on. While restoring power is a priority, doing it safely is a necessity. One disaster is enough.***

Water can be an undesirable conductor of electricity, so whenever water comes in contact with electrical equipment, a potential hazard exists. In many cases the water that has been in contact with the equipment has been contaminated with substances that can negatively affect the equipment's integrity. Remaining water, debris, rust, and chemical contaminants are just some of the sources of hazard.

If electrical distribution or control equipment has been in contact with water or moisture, it must be replaced.

Residual debris or wet surfaces may result in a loss of dielectric spacing within the equipment, presenting a hazard upon re-energization. Some equipment may be reconditioned as determined by a professional.

We suggest that customers always seek professional advice before restoring electrical power and contact a qualified electrician, local electrical building code inspector, trained factory service personnel and the local electrical utility.

## **Must be replaced**

- Miniature and molded-case circuit breakers
- Multi-metering equipment
- Safety switches (AC/DC disconnects)
- Load centers and panelboard interiors
- Switchboard interiors
- Dry-type transformers
- Busway
- All solid-state components
- All electro-mechanical relays, contactors, starters, etc.
- Solid-state motor starters
- Adjustable speed drives
- Programmable logic controllers

## **May be reconditioned\***

- Switchboard enclosures
- Switchgear enclosures
- Iron frame low voltage circuit breakers
- Medium voltage circuit breakers
- Low voltage bolted pressure switches
- Medium voltage switches
- Motor control center enclosures
- Panelboard and load center enclosures
- Liquid-filled transformers
- Cast-resin transformers

\* Equipment should only be reconditioned by trained factory service personnel. Reconditioning may include the repair or replacement of internal components. The ability to recondition will vary.

## **Restoring electrical power safely**

Electrical protection is no place to compromise. When not treated with respect, electricity can injure or kill even the most experienced user. Below is a safety checklist:

- Make sure the power is off before working on any equipment.
- Equipment with visible damage must be replaced.
- Many types of electrical equipment must be replaced after exposure to water, even if no damage is apparent.
- Electrical equipment should be selected and applied in accordance with the ratings, nameplates, wiring diagrams, instructions and warning labels for that equipment.
- Electrical equipment should be installed in accordance with the National Electrical Code and other applicable local or state codes.
- Installations should be inspected by qualified authorities before restoring power.

