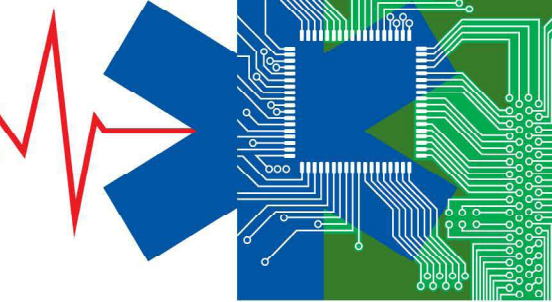
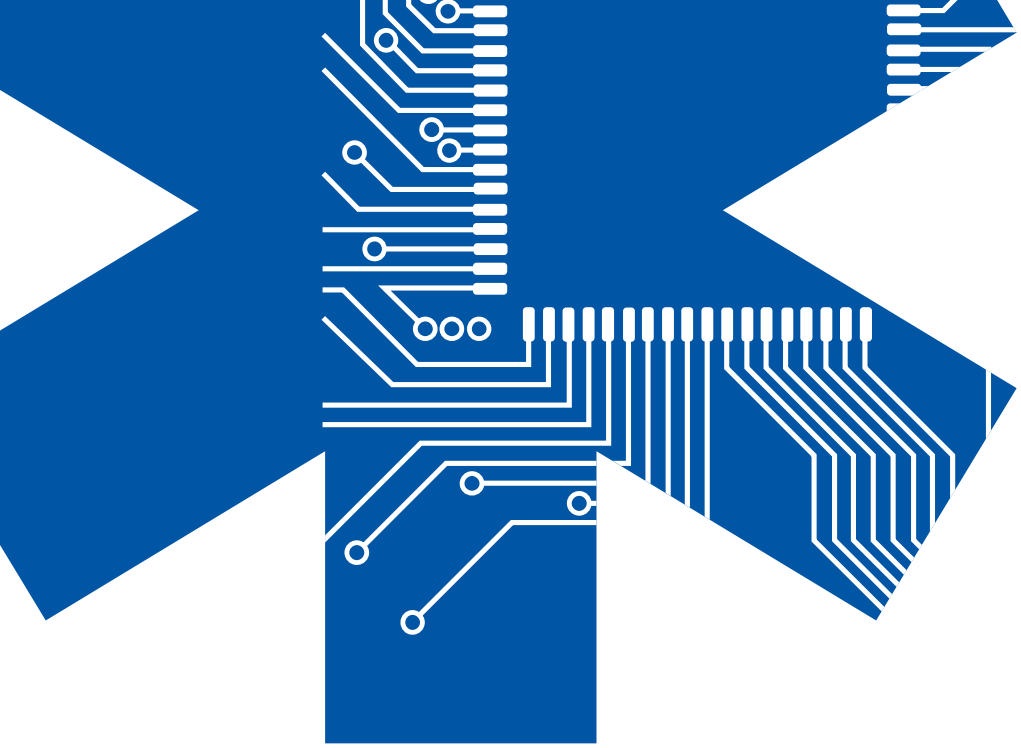


**Technical
Restoration
Services**

ER
ELECTRO-MECHANICAL RECERTIFIERS LLC



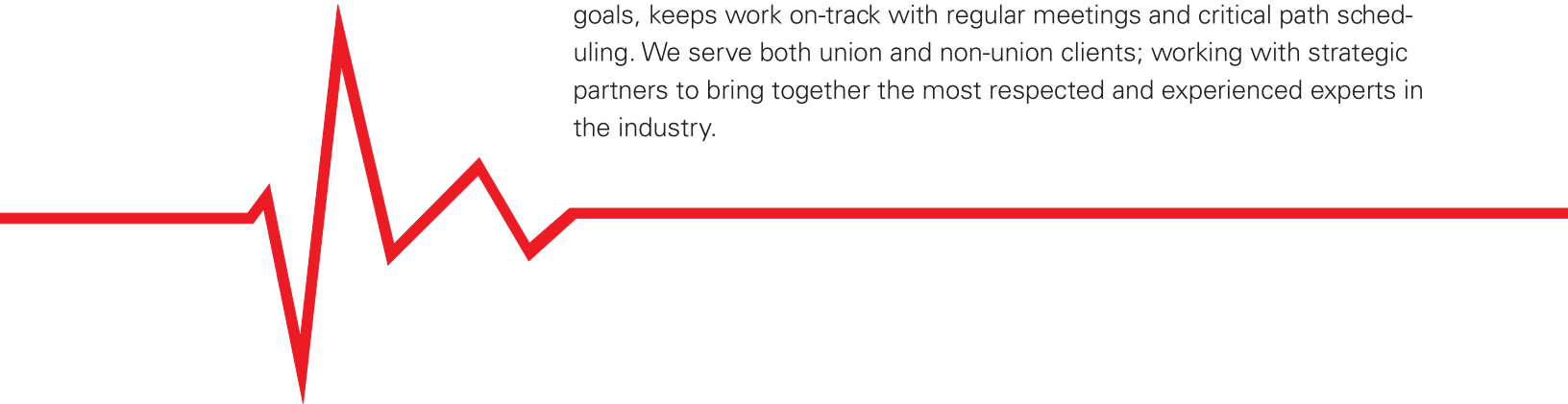


Your emergency service and repair **lifeline**

Commercial buildings, private and public facilities, processing plants and industrial sites affected by disasters have a need to out-source the technical components of their loss. Machinery, electrical equipment and computers that are adversely affected need a fast track recovery plan. In an effort to limit losses and expedite business resumption, ER has such a program in place. Extensive experience with equipment restoration allows us to provide unparalleled response. We understand the challenges of working with unique structures that have been damaged as well as their various building systems, and the electro-mechanical equipment found in different building designs.

Our approach to disaster recovery allows us to become part of your technical recovery team as we work to find timely and cost-effective solutions to restoring your equipment which if left unattended will directly affect your facility's safety and future productivity.

Providing results-based project management by establishing time sensitive goals, keeps work on-track with regular meetings and critical path scheduling. We serve both union and non-union clients; working with strategic partners to bring together the most respected and experienced experts in the industry.



Large Loss & Catastrophic Loss Response After a Disaster Event....

Recovery of any business or organization is mission critical after experiencing a disaster. Lost work days, loss of revenue and production down-time must be minimized...

Fast response is key to recovery and successful to continuity of business.

The Reality

After a business experiences a disaster event, sensitive equipment degrades rapidly.

The Problem

Long lead times are needed to order then replace equipment. High equipment costs and complicated installations add to the business down time.



The Solution

After a loss event occurs, quick response, step logic approach and a programmed system employing our fully equipped mobile lab and dedicated and trained staff allows for saving of technical equipment - made simple. Proper restoration methodology ensures a faster recovery period for any business.



- Mobile lab offers secure, clean and climate controlled environment to store, restore, repair and test.
- Save on shipping & handling and incidental damage costs by restoring equipment on-site.

Equipped to handle electronics, bio-medical, power distribution gear, IT equipment, computers, parts, food processing equipment, machinery, motors, control panel and all equipment types.

Electro-Mechanical Recertifiers, LLC team has developed risk assessment tools. Our technical recovery strategies allow for accurate evaluation, decontamination and testing of equipment.

**ALWAYS a 24/7/365 - RESPONSE
TOLL FREE - 877.378.4183**

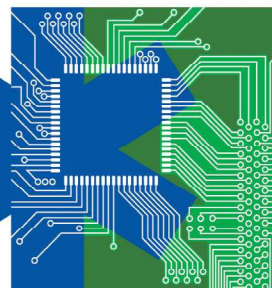
www.ER-EMERGENCY.COM

It is important who responds and how they respond.

You can trust **ER** to bring both elements.

ER
ELECTRO-MECHANICAL RECERTIFIERS LLC

Office Locations Nationwide ■ Toll Free Emergency: 877-378-4183

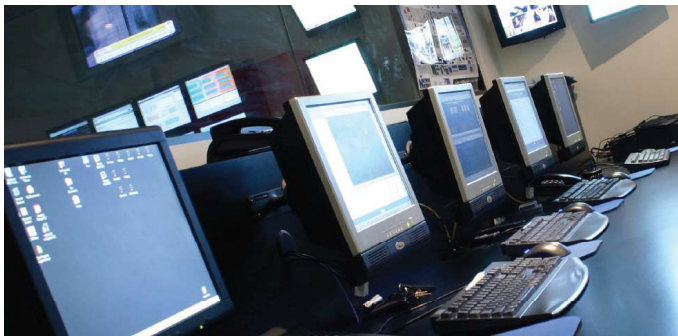


Capabilities

ER's emergency recovery capabilities are supported by a group of highly skilled tradesmen from a broad range of disciplines, from electronics and mechanical technicians, equipment mechanics, to IT experts and millwrights.

Our safety policy protects their welfare and your peace of mind while ER is onsite. Projects are completed with the help of other specialty trades people whenever necessary. We retain the services of various specialty groups from including asbestos handling, hazardous waste, and environmental contractors; electrical and mechanical engineers; restoration contractors; industrial hygienists; PLC programmers, software engineers and control panel electricians.

We offer complete recovery of electrical power equipment and as well as mechanical systems including proprietary machinery. Our group provides can-do attitude and work ethic; our synergistic approach to projects from mitigation to re-certification ensures a complete approach to technical recovery.



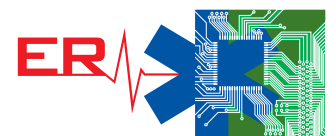
Emergency Response Lab

ER's one-of-a-kind Emergency Response Lab is fully outfitted for corrosion control, decontamination, repair and a NETA testing facility to restore equipment to pre-loss condition. We service equipment of all types, makes and models. Our facility has fully certified and calibrated bench testing with third-party technicians that provide independent testing and validation protocols to make sure equipment meets operational standards. We work with OEM's to establish restoration protocols and criteria for re-certification and eventual re-commissioning of all equipment types.

Making your sensitive electronics and electro-mechanical equipment operational and getting your company back in business is our goal. Don't gamble with your equipment when you can have a sure winner. ER is a win-win company doing the little things that are important to the technical recovery.

Commonly serviced equipment types

- Material handling and automated lines
- Fabrication and molding operations
- Manufacturing equipment and production lines
- Robotics
- CNC and manual machine shop equipment
- Bag house & fume collection devices
- Bio-medical & dental equipment
- Computer/IT/Communication systems
- PLC and relay logic control panels
- Refrigeration/cold storage
- Paint and powder coating lines
- Food and beverage processing
- Commercial kitchen and baking equipment
- Electro-mechanical machinery
- Power distribution and switch gear



CONSULTING DIVISION: Electrical, Mechanical and Specialty Disciplines

Electro-Mechanical Recertifiers, LLC offers technical & engineering reports for the myriad of electrical and mechanical equipment and machinery claim types. Our professional site investigative services followed by supporting laboratory testing, research and analytical assessments produce a quality consulting report used to assist settlement of claims. Our reports have proven valuable from the board room to the courtroom.

Electrical Incidents causing operational issues and/or malfunction, subsequent failure of electrical wiring & power gear, equipment, machinery and computer servers and IT devices:

- Lightning damage
- Power surge incidents
- Utility interruption
- Effects of fire, smoke, water or flood to electronics



Common Electrical Incident Failures:

- Electrical Switchgear Fire
- Failure of Backup Generators and ATS resulting in loss-of-use issues
- Arc Flash accidents
- Electrocuting & shock accidents
- Tank overfills
- Poor maintenance issues
- Overheating and explosions
- Equipment Installation errors
- Electrical design defects
- Alarm systems failures
- Controls failures



Computer Server and Network IT Incidents:

- Loss of data or software applications
- Reconfiguration of devices
- Networking losses
- Cyber hacking or viruses



Mechanical and Structural Incidents:

- Process pipework failures
- Boiler fires and explosions
- Structural failure
- Material defects
- Elevator failures
- Design defects

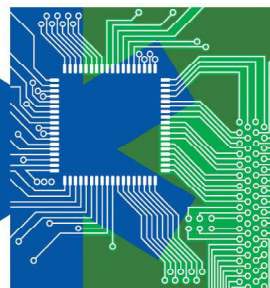
Our team of specialists and professional engineers has experience assessing, investigating and writing reports for many risks that carriers insure and insureds experience. Call today for a complete and accurate assessment of failed equipment items and building systems.

In the U.S. please call us at : 877-378-4183.

International calls (001) 985-377-5599.

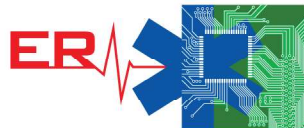
ER
ELECTRO-MECHANICAL RECERTIFIERS LLC

Office Locations Nationwide ■ Toll Free Emergency: 877-378-4183



ER-EMERGENCY.COM

877-378-4183



Office Locations Nationwide